

UEE

MODULAR LABORATORY



These laboratory modules have limitless potential for expansion and can meet all project assay requirements. A simple preparation unit can be expanded to a full production and support laboratory. Laboratory configurations may include; Core Logging and Splitting, Sample Preparation, Fire Assaying, Wet Assaying, Metallurgical Laboratory, Environmental Analysis, Oil Analysis, Offices, Lunch Rooms, Wash-rooms.

Modules are of heavy steel construction and built to maximum highway width, without the requirement for a pilot car (11' 2"), providing an exceptional working area that allows people to work comfortably on opposite benches. The 10 foot height provides adequate space for dust and fume hood installation with required ventilation piping installed inside the modules. This reduces

site setup time, eliminates component damage during shipping and reduces the number of outside shell openings.

Installed lighting is designed to provide maximum illumination without casting shadows over work areas, and windows can be provided for additional natural light. The interior walls are coated with highly reflective powder coat paint.

Depending on climate, the units are provided with demand or forced make-up air that can be heated and/or evaporator cooled.

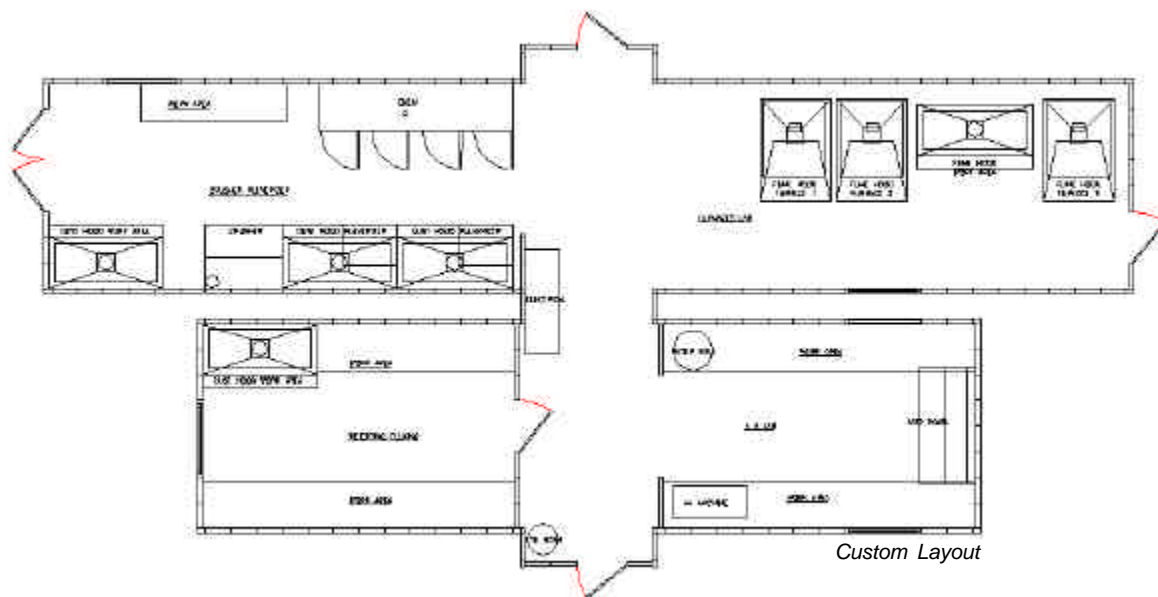
Since the foundation requires only six footings for the tie-in module and two on each production module, set up and commissioning can be complete within a week of receiving the modules.

SAMPLE RECEIVING & PREPARATION

Sample entry into the preparation laboratory is through exterior double steel doors. This module contains a TM Rhino jaw crusher, a LM2 pulverizer, and a four door built-in electric oven with a capacity of 40, ten kilogram samples. The crusher and pulverizer are housed within dust capture hoods that are vented into a bag house, with make up air entering through the floor grating.

Each work station includes a compressed air hand gun, with independent regulators. Three technicians can comfortably work in the sample preparation area, which has a production capacity of 400 samples daily.





W ET LABORATORY - ATOMIC ABSORPTION (AA) MODULE

This module is the center for digestion and final assay work. Cabinets are designed specifically for each application with acid resistant epoxy or stainless steel counter tops. The fume hood is provided with water wash down, fan, scrubber and interior fume hood lighting that allows for good visual inspection of the digestion process.

A shelf in front of the hot plates is at counter level providing a ventilated work area. Ventilation to remove acid fumes from the Atomic Absorption unit is provided by stainless steel hood and piping. Make up air intake is through floor grating in front of the fume hood. This allows for circulation of fresh air past the laboratory personnel.

Hot water is provided by a demand heating system eliminating the need for a storage tank. Water distillation equipment is located at maximum height near the sink for gravity feed into work locations.

An emergency eyewash and shower are located near an outside exit of the tie-in module, with easy access from the chemical work stations.

FIRE ASSAY LABORATORY

This 25 foot long module houses three Mines Assays GLO-BAR electric furnaces, two for fusion and the other for cupellation. Access to the rear of the furnaces is through removable wall panels, behind each furnace. This allows placing the furnaces within 10" of the wall, creating maximum work area.

A single pouring and slagging hood is situated between the two fusion furnaces. It includes a unique crucible drain rack that swings to the rear of the hood to maximize working space. A discharge hopper in the bottom of the hood provides a ventilated collection area for slag and other lead-bearing waste material. A perforated floor area in front of the furnaces provides fresh make up air that can be heated or cooled as required. The cupellation furnace has a specially designed fume capture hood with shelf space for three sets of 24 cupules. Two technicians can comfortably work in the fire assay module, which has a production capacity of 350 samples daily.



UEE INDUSTRIES (Unit Electrical Engineering Ltd)

1406 Maple Street, Site 1 Comp 80 RR#1, Okanagan Falls, British Columbia, Canada V0H 1R0
 phone: (250) 497-5254 fax: (250) 497-6061 e-mail: <general@uee.com> website: <www.uee.com>

in consultation with: **ANALYTICAL LABORATORY CONSULTANTS LTD.**

Jack Stanley - phone: (250) 545-0548 e-mail <jstanley@jsanalytical.com>